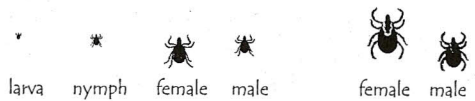


TICK IDENTIFICATION CARD



Deer ticks
(actual size)

American dog ticks

MA Department of Public Health
617.983.6800
www.mass.gov/dph

TICK TIPS

Deer tick nymphs and adults may carry germs that cause Lyme disease, babesiosis or human granulocytic ehrlichiosis. American dog ticks do not carry the germs that cause these tick-borne diseases, but they may carry others.

Deer ticks are found year round, near the ground, mostly in wooded habitats. Tick nymphs in May-July and adult ticks in October-December pose the highest risk.

Ticks may be seen readily on light colored clothing. Do tick checks frequently. Use repellents appropriately.

Remove imbedded ticks at once. Grasp the tick at the point of entry and pull back steadily using tweezers. Avoid squeezing the tick. Swab the site with antiseptic, such as hydrogen peroxide.

If you suspect that you have a tick-borne disease, see your doctor. 3/06